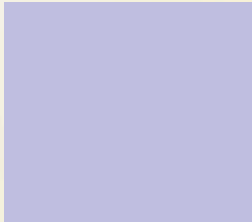


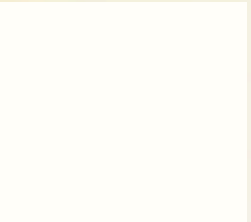
**UNISEX.
BOSS IS BOSS.**



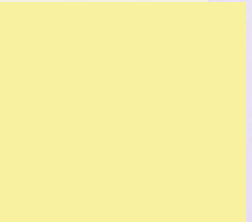
HUSH LILAC



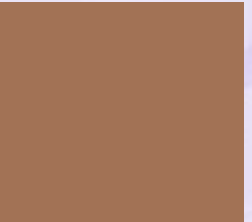
ACTING ORANGE



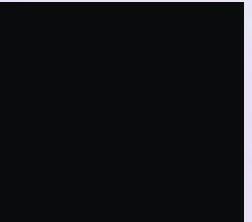
ROASTED WHITE



ILLUMINATING
YELLOW



HARD NUTTY BROWN



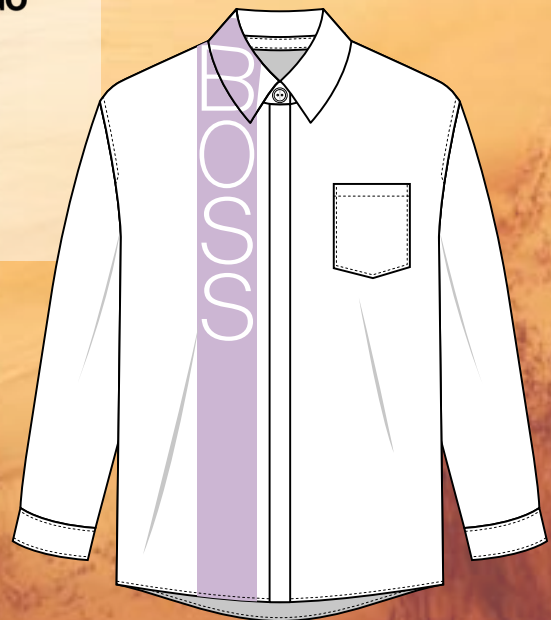
STRONG BLACK





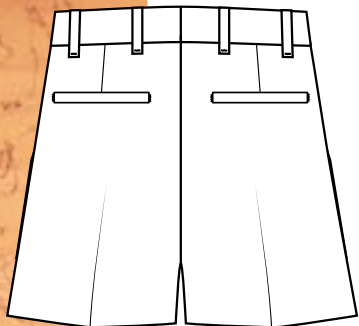
WHITE SHIRT WITH LOGO

- Kent collar
- Patch chest pocket
- Yoke in back
- Consealed button closure

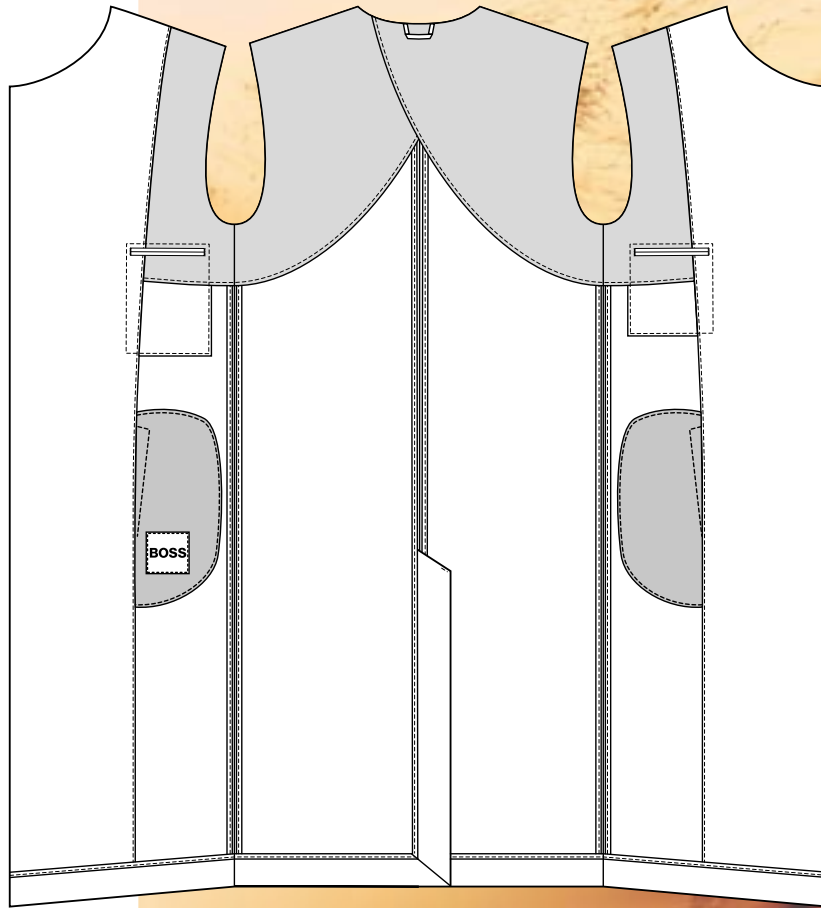


CLASSIC SHORT

- Hook and zip closure
- French pockets in front
- Belt loops
- Creases in front and back
- Welt pockets in center back

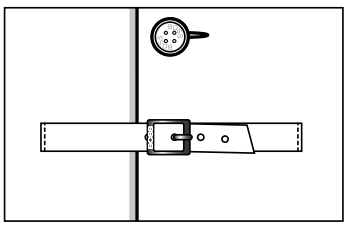


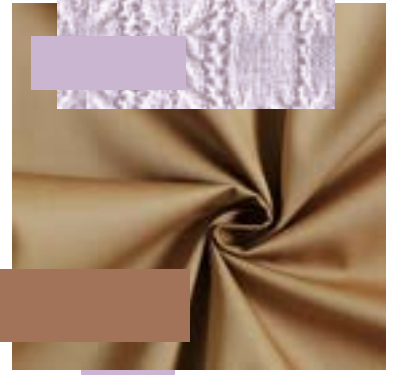
2208 208BOS 2208BO
208BOS 208BOS
N OBO N OBO
C B O B
N OBO W OBO
208BOS 208BOS 208BOS
208BOS 208BOS 208BOS
N OBO N OBO
C B O B
N OBO W OBO
208BOS 208BOS 208BOS
208BOS 208BOS 208BOS
N OBO N OBO
C B O B
N OBO W OBO
208BOS 208BOS 208BOS
208BOS 208BOS 208BOS
N OBO N OBO
C B O B
N OBO W OBO
208BOS 208BOS 208BOS
208BOS 208BOS 208BOS



LONG GABARDINE COAT

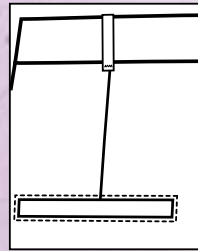
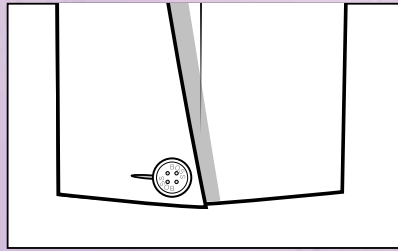
- Collar with bridge
- Belted closure and buckle in center front
- Single-breasted
- Welt pockets in front
- Two-seam sleeve
- Vent in center back
- Half lined





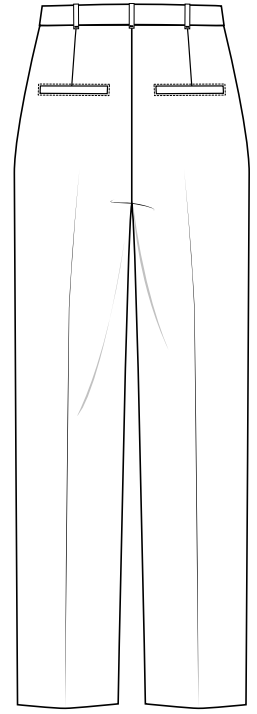
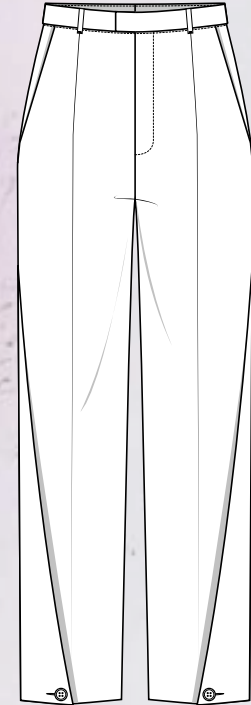
OVERSIZE KNIT PULLOVER

- Cable pattern knit
- Ripped sleeves and hem cuffs
- Oversize stand collar
- Patched logo



TROUSERS WITH PLEATS

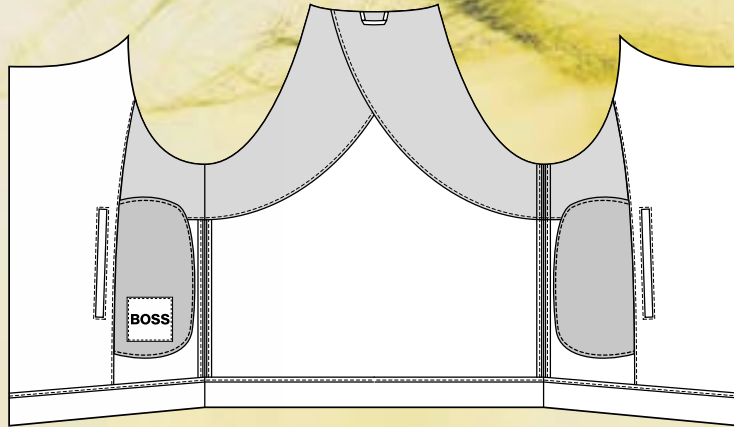
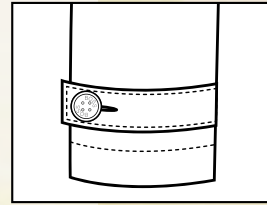
- French pockets in front
- Belt loops
- Hook and zip closure
- Crease in front and back
- Pleat in side with button closure
- Welt pockets in back





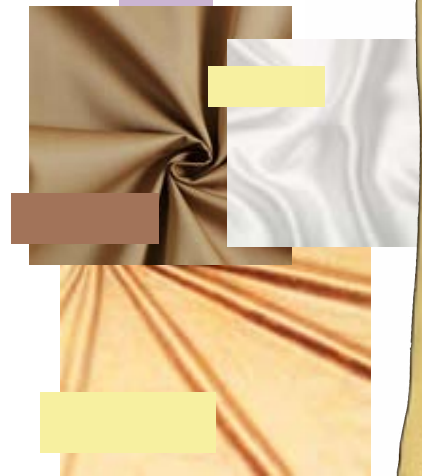
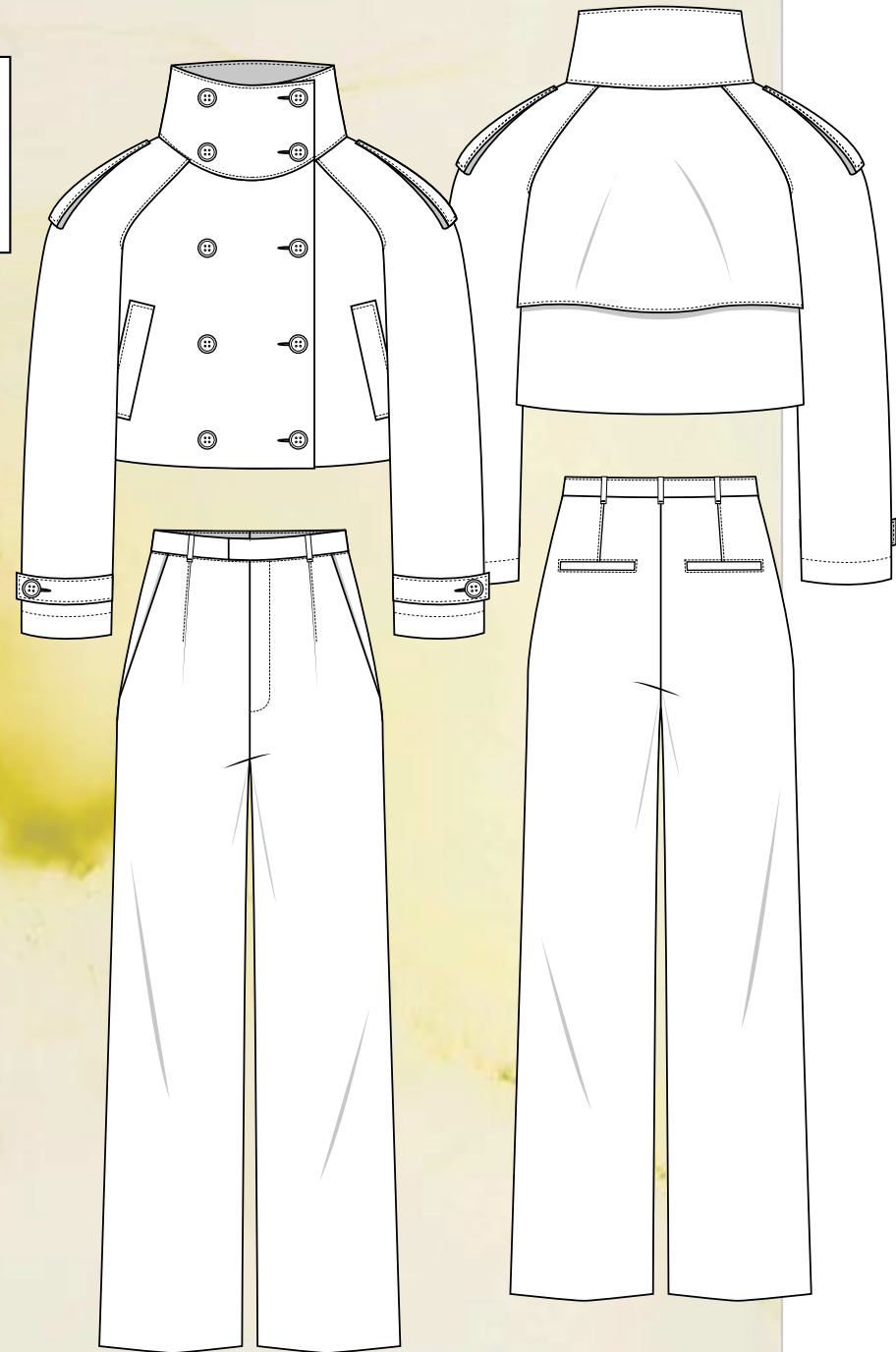
CROPPED TRENCH

- Stand collar
- Raglan sleeves
- Double-breasted button closure
- Single-welt pockets
- Epaulettes
- Belted cuffs
- Storm shield in back
- Partially lined



LEATHER PANTS

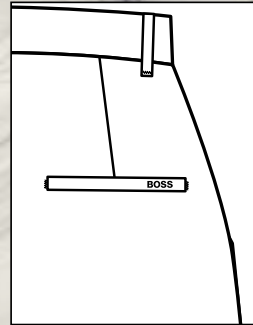
- High rise
- Hook and zip closure
- Belt loops
- French pockets
- Topstitched darts
- Welt pockets in back
- Wide legs





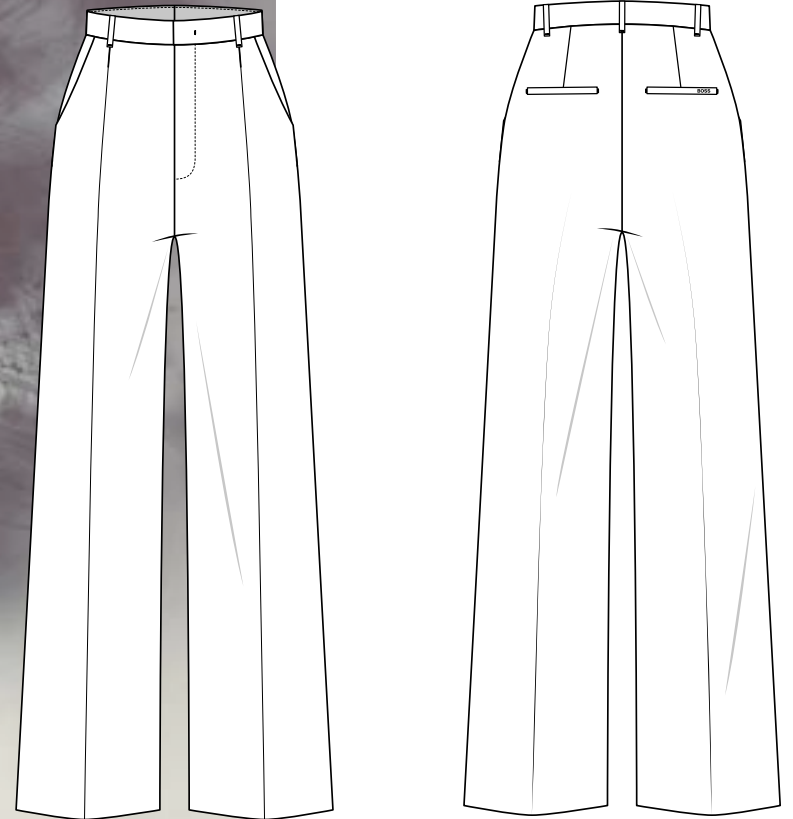
SHEER SHIRT

- Seethrough logo stitched mesh
- Slim fit
- Collar with dividing seams
- Long sleeves
- Dividing seam in center back



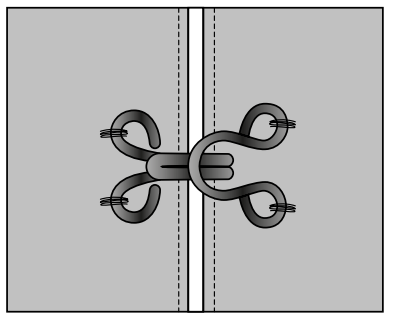
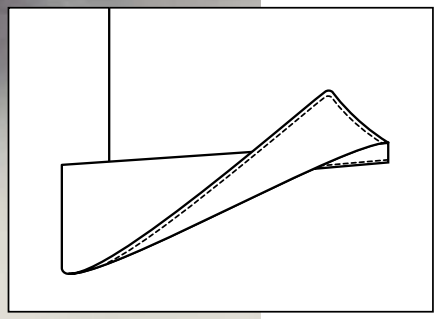
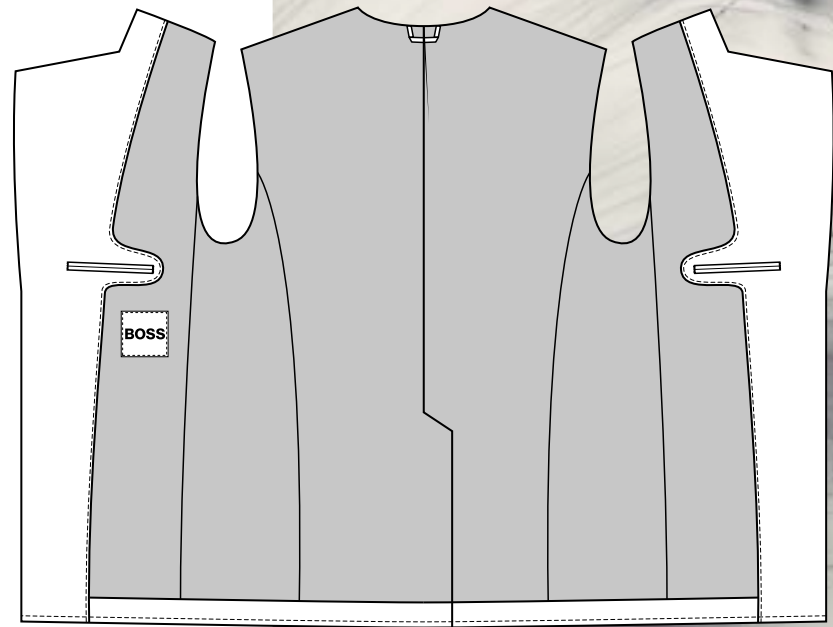
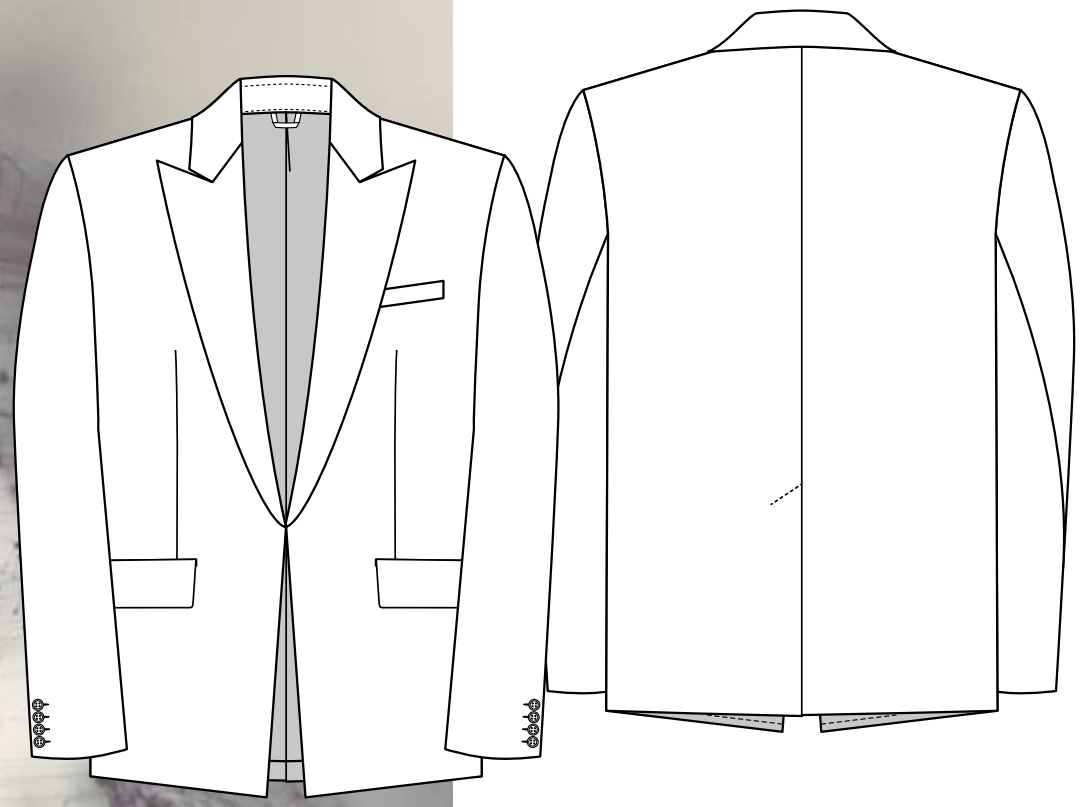
HIGH RAISE PANTS

- Belt loops
- Hook and zip closure
- Crease in front and back
- French pockets in front
- One welt pocket in back
- Wide leg
- Unlined



OVERSIZED BLAZER

- Relaxed fit
- Peak lapel
- Concealed button closure
- Welt chest pocket
- Flap pockets
- Kissing buttons on the cuff
- Vent in the back
- Inside jet pocket
- Fully lined



BOSS — S BOSS

